



University Services

Department of Public Safety

The Department of Public Safety provides the University of Minnesota community with the highest possible level of safety and security. With professionals in law enforcement, emergency preparedness, and security, Public Safety works in partnership with University students, staff, and faculty to create a culture of safety on campus. Three key areas make up the Department of Public Safety: Central Security, Emergency Management and the University of Minnesota Police Department.

The Department of Central Security designs, installs, maintains and monitors all access control, alarm, emergency communication and video surveillance systems across the University system. Central Security partners with departments to develop and implement security plans for renovations and new construction; aligning technology with the security needs of the University community. Central Security also oversees the newly developed Public Safety Communications Center which has co-located the 911 Dispatch activities into the monitoring and video surveillance systems.

The Department of Emergency Management has system-wide responsibility for developing, implementing and sustaining the emergency management program of the University, in coordination with local, state and federal entities. Emergency Management oversees the Emergency Operations Plan which is certified by the Department of Homeland Security. In addition, Emergency Management coordinates emergency medical coverage at large events on the Twin Cities Campus

The University of Minnesota Police Department is a professional, sworn-officer licensed police department, with 50 peace officers dedicated to protecting the people and property of the Twin Cities campus community.



Vision, Mission and Purpose

Vision – People are safe. People feel safe. Services are provided with fairness and respect.

Mission – Create and promote a safe and secure environment for the University Community through proactive, impartial and innovative services.

Goal/Purpose – Develop and support an environment in which University community members can safely achieve their educational, research and employment goals without fear of concern for their personal safety.

Strategic Objectives

Customer Perspective – Communications to ensure responsive, efficient, professional and innovative services to best meet community needs and expectations.

Continuous Improvement & Innovation – Proactively engaging in trend-based analysis on emergency problems and ensuring technology and staff are properly aligned.

Learning & Growth – Increase efficiency and effectiveness through more powerful professional development.

Accountability – Responsible for our work; follow laws, policies and regulations; and continually hold ourselves accountable.



Primary Services

Department of Central Security

- Access Services & Security ID Badge
- Locksmith Services
- Monitoring Services
- Technical Services – Alarms & Card Readers
- 911 Dispatch and alarm response

Department of Emergency Management

- Emergency Operations Planning
- Emergency Preparedness Training
- Emergency Medical Services
- Incident Command Training
- Operational Continuity

University of Minnesota Police Department

- Directed Patrol
- Investigations
- Traffic Safety and Enforcement
- Community Policing
- Student Monitor Patrol



Academic Enterprise Support

In order to provide optimum services to the University community, Public Safety maintains partnerships with many groups on campus including: the Office of Student Affairs, Housing & Residential Life, Environmental Health and Safety, the University Hospital and Clinics, Disability Services, many Student Associations, Greek Action Council, and the Parent's Office.

The Department of Public Safety is extensively involved in Welcome Week, educating incoming students about safety on campus and in the city, providing personal safety tips and encouraging the use of the Security Monitor Program walking escorts. Public Safety is also very visible during the annual summer Parent Orientation programs and receives very high ratings from parents. Ongoing outreach efforts include Campus Safety Awareness events, presentations at University Senate Committee meetings and Board of Regents meetings. Public Safety staff members serve on several cross-departmental task forces and committees including those related to alcohol, tobacco and other drugs, violence against women, and student mental health.

To effectively manage the many issues related to serving a large campus in a major metropolitan area, Public Safety must cultivate and maintain critical partnerships with Twin Cities community organizations including groups from the Marcy-Holmes, the West Bank and Como neighborhoods. On Coordinate Campuses, Public Safety partnerships include the local governments and local law enforcement.

Public Safety also partners with other law enforcement agencies and Federal and State Public Safety colleagues including the Minneapolis and St. Paul Police Departments, Hennepin and Ramsey County Sheriff's Offices, Minnesota Homeland Security, FEMA and others.

An example of how the Public Safety units collaborate occurred recently when Central Security Monitors alerted University Police of a late night motion alarm in one of the Northrop District buildings. Monitors used security cameras to track the suspects and provided continuous information to Police Dispatch, who relayed the information to Officers on duty. The suspect was apprehended within an hour, and Central Security compiled video footage to provide positive identification of the suspect and the attempt to elude the police. Cooperative efforts will be made even easier in 2011 when Police Dispatch and Central Security Monitors move into a shared Public Safety Emergency Communications Center.



Current Challenges

- Maintaining campus safety and contributing to safety in the surrounding community.
- Managing the additional workload associated with on-campus football at TCF Bank Stadium
- Engaging the University community to ensure everyone takes responsibility for safety
- Working with students so that they engage in safe behaviors
- Strengthening our prevention efforts and protection of our research enterprise
- Continuing to strengthen partnerships with external entities
- Maintaining public safety in the face of fluctuating crime in the surrounding urban neighborhoods where University students live, work and recreate in light of declining city police resources
- Enhancing our ability to respond to emergencies and ensure operational continuity in the event of an emergency

Current Initiatives

- Football game day operations refinement
- Continuous crime analysis and proactive strategies
- Continuing to increase the capacity to prepare for, prevent, respond to, mitigate, and recover from all hazards and disasters
- Leveraging coordination with the cities of Minneapolis, Falcon Heights, and St Paul on the Twin Cities Campus
- Alcohol Policy and Abuse Prevention (APAP) Committee



Financial Overview

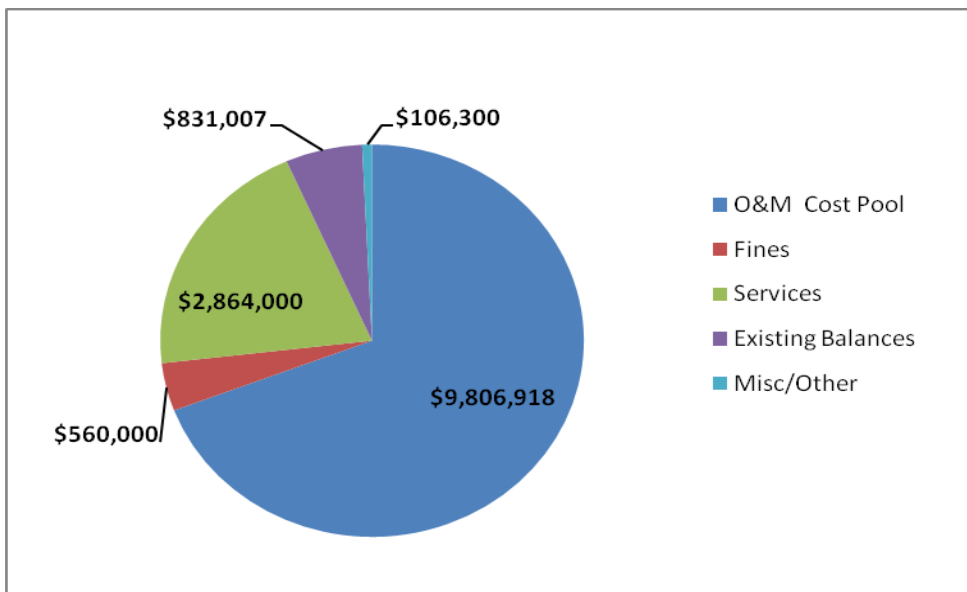
Providing services to the entire U of M system, the Department of Central Security receives 76 percent of their funding from the Administrative Support Unit (ASU) cost pool and 24 percent from fee for service.

Emergency Management, also providing services to the entire U of M system, receives 67 percent of their funding from the ASU cost pool and 33 percent from fee for service.

University of Minnesota Police Department supports the Twin Cities campus and receives 66 percent of its funding from the Academic Support Unit cost pool. In addition, UMPD receives 19 percent of its funding from event security and student monitor services, and the remaining 15 percent will be funded in FY 11 from fine revenues, balances and other miscellaneous sources.

Budget

The Department of Public Safety maintained a \$14.1 million budget for Fiscal Year 11 as shown in this graph of the source of funds. Fine revenue has decreased over the past several years and Public Safety is being challenged to review existing programs for other reductions.



Workforce

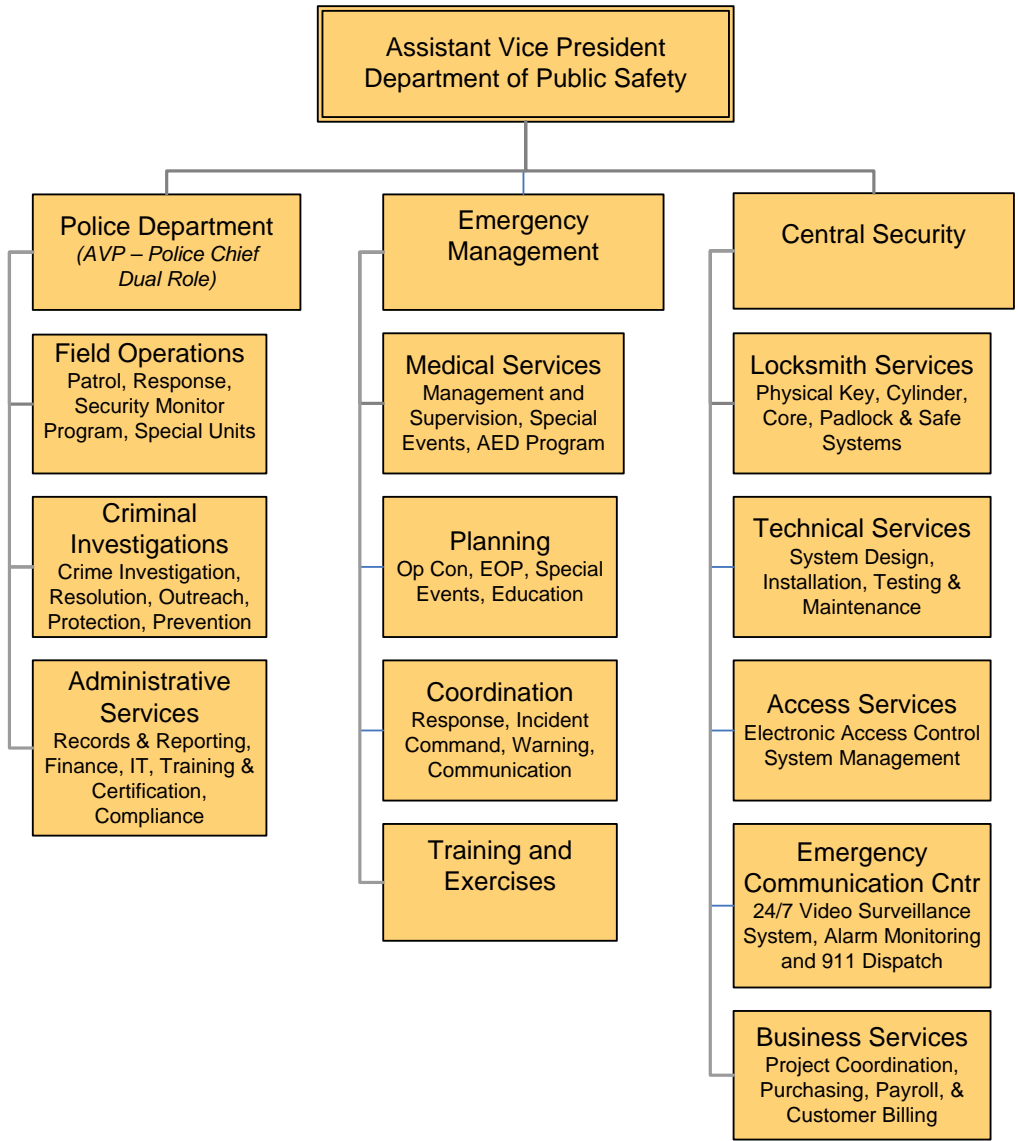
As of September 2010, Department of Public Safety units included 248 Full Time Equivalent employees, with an actual headcount of 383.

Department of Public Safety Personnel Data	Student	Union	Professional or Academic	Civil Service	Grand Total
Employee Headcount	169	78	4.0	132.0	383.0
Full Time Equivalents	84.5	85.5	4.0	74.0	248.0



Organizational Chart

Department of Public Safety





Regulatory Responsibilities

The Department of Public Safety has responsibility for the following U-Wide administrative policies:

- [Operational Continuity Planning](#)
- [Getting Access to University Buildings](#)
- [National Incident Management System \(NIMS\) at the University of Minnesota](#)
- [Security ID Badges](#)

DPS also has responsibility for the following Board of Regents policies:

- [Possession and Carrying of Weapons](#)

DPS provides information in compliance with all applicable police-related statutes, federal and local emergency management requirements, as well as the Campus Security Act (Clery Act) and Annual Fire Safety [Report](#).